



CeDe News - May 2011

CeDe

Tunneling crawler excavator

For spacious tunnels



CeDe Tunneling machine based on crawler excavator EC240C

The standard excavator is equipped with tiltable cab with safety glasses and certified grill protections and additional LED working lamps.

An air compressor is blowing clean air around the hydraulic breaker spit.



Boom is equipped with optional boom cylinder console for increase working height up to 10 mtr.

Tiltable cab

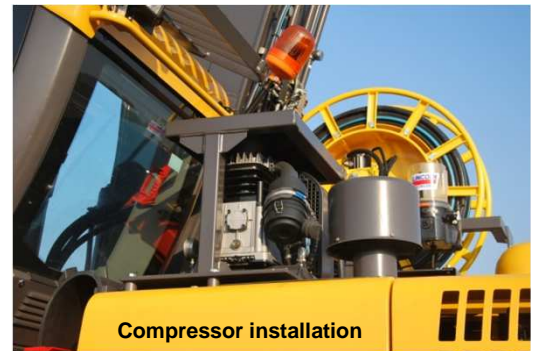


Hose reel

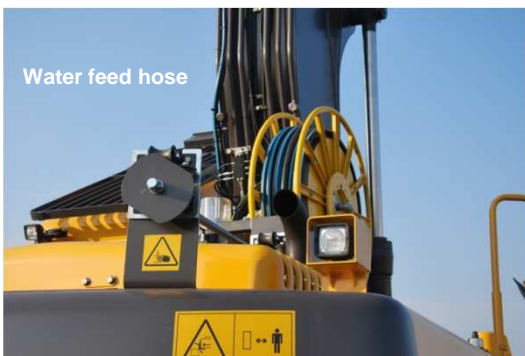


Cylinder rubber protection

Water is feed from a hose reel to the arm top to keep dust down. Bucket cylinder has strong protections against falling stones. Engine compartment is equipped with fire extinguishing system.



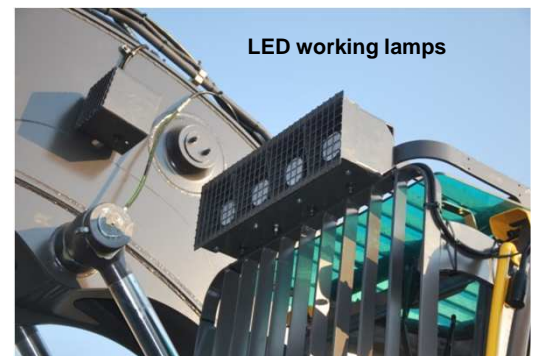
Compressor installation



Water feed hose



Fire extinguishing system



LED working lamps



Vinkelgatan 15 SE-211 24 MALMÖ +46 40 38 32 00
info@cede-group.se - www.cede-group.se

Other products

